

Autocal V3 Instructions

Reading your stock file for 2001 - 2010 Duramax & 06 - 09 Cummins:

(This option not avail for 2011 and newer Duramax or 2010 and newer Cummins)

Select "F1: Read tune", then press the "Check Mark" button, then select your ECM.

01-04 Dmax = LB7, 05-06 Dmax = LLY, 06-07 Dmax = LBZ, 07=10 Dmax = LMM

06-07 5.9L Cummins = CMB, 07-09 6.7L Cummins = CMC.

Then press the "Check Mark" button.

Allow device to read file. When complete, device will save file to itself.

Flashing your custom tune to your vehicle from the Autocal V3

Step 1:

Connect the OBDII cable to the V3 device, and then connect to vehicle.

Step 2:

Turn Key to Run position. Do not start vehicle.

Step 3:

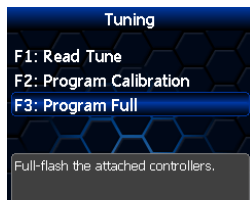
Press button "2" (Tune Tool should highlight), then press the "Check Mark" button.

Step 4:

Select "F1: Tuning", then press the "Check Mark" button.

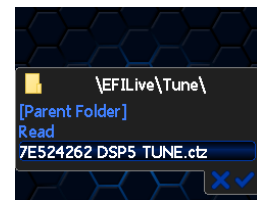
Step 5:

Select "F3: Program Full", then press the "Check Mark" button.



Step 6:

Select your tun file. Your tune file will be the last 8 of your VIN, along with tune type. Select it then press the "Check Mark" button.



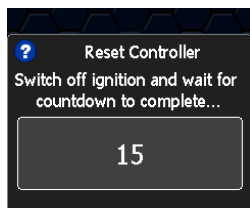
Step 7:

Agree to the 2 warnings by pressing the "Check mark" button. The tune will begin to flash.

If this is the first time you flashed this vehicle with this device, you will get a "License this controller" message. Accept it by pressing the "Check Mark" button. It will ask to confirm, again press the "Check Mark" button. Allow vehicle to flash. DO NOT TURN KEY OFF, TURN ACCESSORIES ON OR OFF, CONNECT ANYTHING TO POWER PORTS, ETC. BASICALLY, DON'T TOUCH ANYTHING WHILE ITS FLASHING. WE ARE NOT RESPONSIBLE FOR ECM CORRUPTION ISSUES.

Step 8:

When it has completed flashing, you will get a message to turn key off, and wait for the count down. Follow the on screen prompts from here.



Please visit our website for additional instructions, or contact us for further help.

Thank You!